



TOGETHER, CREATING SUSTAINABLE VALUE

Fourth Quarter 2016 Conference Call | February 16, 2017

 **GOLDCORP**



David Garofalo
*President and
Chief Executive Officer*



Todd White
*EVP and
Chief Operating Officer*



Russell Ball
*EVP and
Chief Financial Officer*



Paul Harbidge
SVP, Exploration

This presentation contains “forward-looking statements”, within the meaning of Section 27A of the United States Securities Act of 1933, as amended, Section 21E of the United States Exchange Act of 1934, as amended, or the United States Private Securities Litigation Reform Act of 1995, and “forward-looking information” under the provisions of applicable Canadian securities legislation, concerning the business, operations and financial performance and condition of Goldcorp. Forward-looking statements include, but are not limited to, statements with respect to the future price of gold, silver, copper, lead and zinc, the estimation of Mineral Reserves (as defined in slide 28) and Mineral Resources (as defined in slide 28), the realization of Mineral Reserve estimates, the timing and amount of estimated future production, costs of production, targeted cost reductions, capital expenditures, free cash flow, costs and timing of the development of new deposits, success of exploration activities, permitting time lines, hedging practices, currency exchange rate fluctuations, requirements for additional capital, government regulation of mining operations, environmental risks, unanticipated reclamation expenses, timing and possible outcome of pending litigation, title disputes or claims and limitations on insurance coverage. Generally, these forward-looking statements can be identified by the use of words such as “plans”, “expects”, “is expected”, “budget”, “scheduled”, “estimates”, “forecasts”, “intends”, “anticipates”, “believes” or variations of such words and phrases or statements that certain actions, events or results “may”, “could”, “would”, “might” or “will”, “occur” or “be achieved” or the negative connotation thereof.

Forward-looking statements are necessarily based upon a number of factors that, if untrue, could cause the actual results, performances or achievements of Goldcorp to be materially different from future results, performances or achievements expressed or implied by such statements. Such statements and information are based on numerous assumptions regarding present and future business strategies and the environment in which Goldcorp will operate in the future, including the price of gold and other by-product metals, anticipated costs and ability to achieve goals. Certain important factors that could cause actual results, performances or achievements to differ materially from those in the forward-looking statements include, among others, gold and other by-product metals price volatility, discrepancies between actual and estimated production, mineral reserves and mineral resources and metallurgical recoveries, mining operational and development risks, litigation risks, regulatory restrictions (including environmental regulatory restrictions and liability), changes in national and local government legislation, taxation, controls or regulations and/or change in the administration of laws, policies and practices, expropriation or nationalization of property and political or economic developments in Canada, the United States and other jurisdictions in which the Company does or may carry on business in the future, delays, suspension and technical challenges associated with capital projects, higher prices for fuel, steel, power, labour and other consumables, currency fluctuations, the speculative nature of gold exploration, the global economic climate, dilution, share price volatility, competition, loss of key employees, additional funding requirements and defective title to mineral claims or property. Although Goldcorp believes its expectations are based upon reasonable assumptions and has attempted to identify important factors that could cause actual actions, events or results to differ materially from those described in forward-looking statements, there may be other factors that cause actions, events or results not to be as anticipated, estimated or intended.

Forward-looking statements are subject to known and unknown risks, uncertainties and other important factors that may cause the actual results, level of activity, performance or achievements of Goldcorp to be materially different from those expressed or implied by such forward-looking statements, including but not limited to: risks related to international operations including economic and political instability in foreign jurisdictions in which Goldcorp operates; risks related to current global financial conditions; risks related to joint venture operations; actual results of current exploration activities; actual results of current reclamation activities; environmental risks; conclusions of economic evaluations; changes in project parameters as plans continue to be refined; future prices of gold and other by-product metals; possible variations in ore reserves, grade or recovery rates; failure of plant, equipment or processes to operate as anticipated; the benefits of the acquisition not being realized; risks related to the integration of acquisitions; accidents, labour disputes; delays in obtaining governmental approvals or financing or in the completion of development or construction activities and other risks of the mining industry, as well as those factors discussed in the section entitled “Description of the Business – Risk Factors” in Goldcorp’s most recent annual information form available on SEDAR at www.sedar.com and on EDGAR at www.sec.gov. Although Goldcorp has attempted to identify important factors that could cause actual results to differ materially from those contained in forward-looking statements, there may be other factors that cause results not to be as anticipated, estimated or intended. There can be no assurance that such statements will prove to be accurate, as actual results and future events could differ materially from those anticipated in such statements. Accordingly, readers should not place undue reliance on forward-looking statements. Forward-looking statements are made as of the date hereof and, accordingly, are subject to change after such date. Except as otherwise indicated by Goldcorp, these statements do not reflect the potential impact of any non-recurring or other special items or of any dispositions, monetizations, mergers, acquisitions, other business combinations or other transactions that may be announced or that may occur after the date hereof. Forward-looking statements are provided for the purpose of providing information about management’s current expectations and plans and allowing investors and others to get a better understanding of the Company’s operating environment. Goldcorp does not intend or undertake to publicly update any forward-looking statements that are included in this document, whether as a result of new information, future events or otherwise, except in accordance with applicable securities laws.

FOURTH QUARTER & FULL YEAR 2016 HIGHLIGHTS

- Focus on cost containment delivered low all-in sustaining cost¹ (“AISC”) of \$747 per ounce in the fourth quarter
- Strong fourth quarter production¹ of 761,000 ozs
- Achieved full year production guidance at low end of AISC range
- Robust project pipeline continues to advance on schedule
- 20/20/20 growth strategy expected to deliver increasing net asset value per share
- Announced divestiture of non-core assets in early 2017

⁽¹⁾ See Appendix C for footnotes



**RESTRUCTURING
TO FOCUS ON
NAV GROWTH
DELIVERS SOLID
QUARTER**

<i>(US\$ millions except where noted)</i>	Three months ended Dec. 31		Year ended Dec. 31	
	2016	2015	2016	2015
Gold production¹ (ounces)	761,000	909,000	2,873,000	3,464,000
Gold sales¹ (ounces)	768,000	918,000	2,869,000	3,591,000
Operating cash flows	\$239	\$401	\$799	\$1,430
Adjusted operating cash flows¹	\$383	\$504	\$1,120	\$1,651
Net earnings (loss)	\$101	\$(4,271)	\$162	\$(4,157)
Net earnings (loss) per share	\$0.12	\$(5.14)	\$0.19	\$(5.03)
By-product cash costs¹ (per ounce)	\$481	\$687	\$573	\$605
AISC¹ (per ounce)	\$747	\$977	\$856	\$894

⁽¹⁾ See Appendix C for footnotes

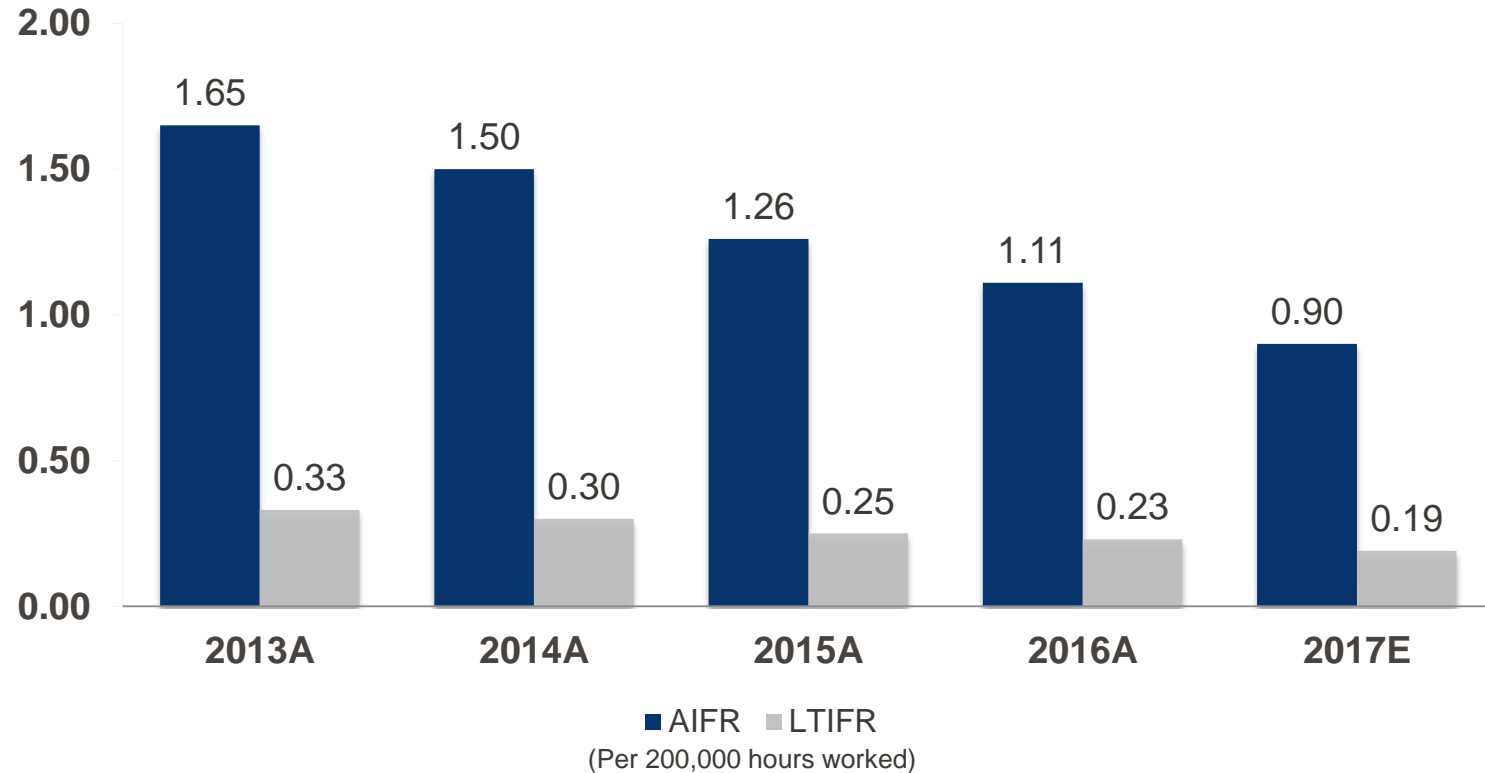
Reoriented the Business

- ✓ Completed decentralization and restructuring of the business
- ✓ Focused organization on NAV per share growth
- ✓ Overhauled planning process
- ✓ Strengthened senior management team
- ✓ Restructured the portfolio
- ✓ Committed over \$1 billion in new growth projects



CONTINUED YEAR OVER YEAR IMPROVEMENT IN SAFETY

7



OPERATING HIGHLIGHTS

8

Peñasquito

- Increased grade as expected
- Grade profile declining in 2017 as low-grade stockpile material is processed

Cerro Negro

- Restructuring completed
- Completed pre-feasibility study for Marianas Complex

Éléonore

- Production shaft and ore handling system commissioned
- Development of fifth mining horizon on track

Red Lake

- Solid quarter on both production and AISC
- Cochenour and HG Young concept studies advancing

Porcupine

- Advanced Dome Century project to pre-feasibility study

Musselwhite

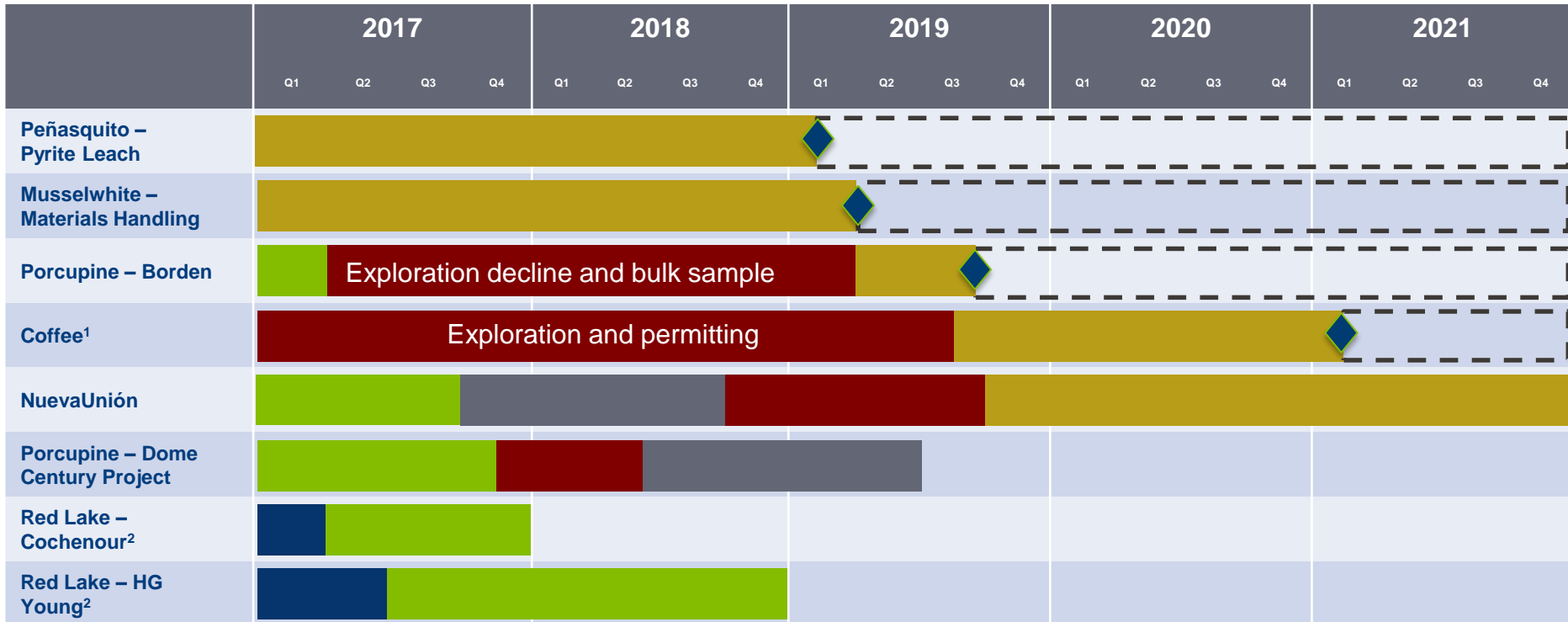
- Solid quarter of production and low AISC

Pueblo Viejo

- Strong quarter of production coupled with low AISC



BENEFITS OF A DIVERSIFIED PORTFOLIO



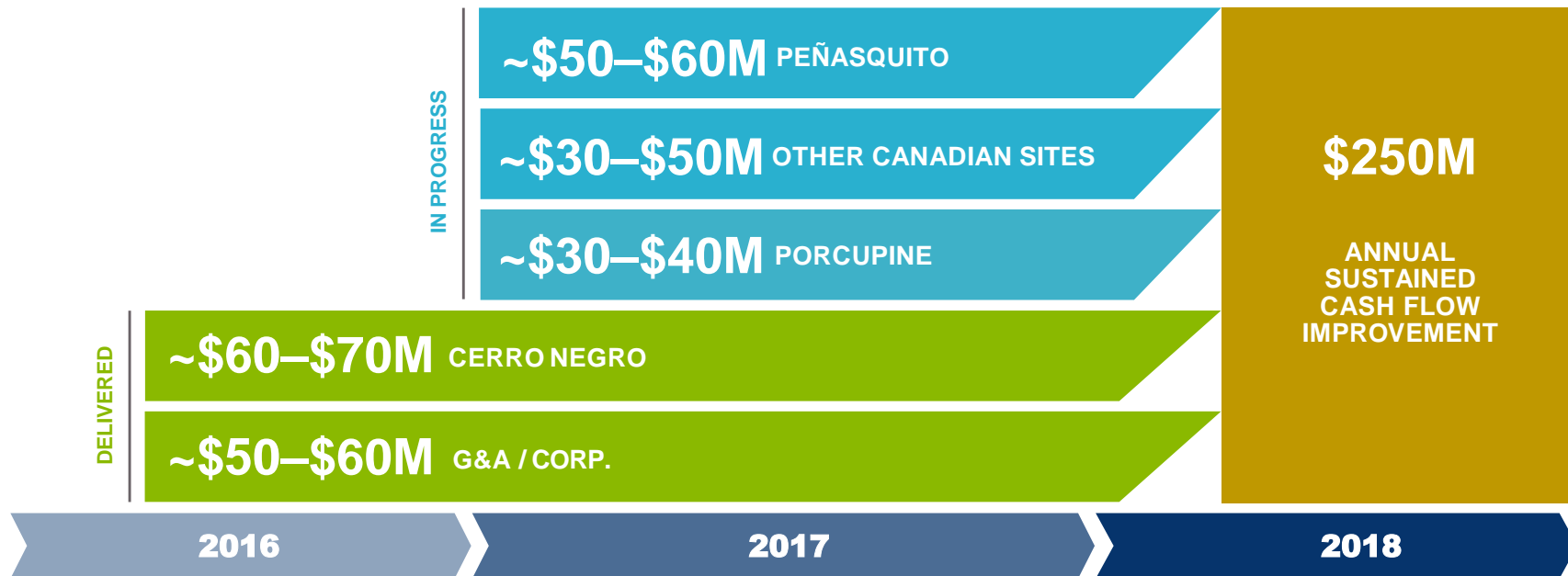
■ Concept Study
 ■ Pre-Feasibility Study
 ■ Execution
 ■ Permitting
 ■ Feasibility Study
 ■ Project in Operations
 ◆ Commercial Production

¹ Coffee project has completed a feasibility study and will begin construction upon receipt of permits
² Starter Mine approach; will gain better information during pre-feasibility stage to determine timing of feasibility and execution

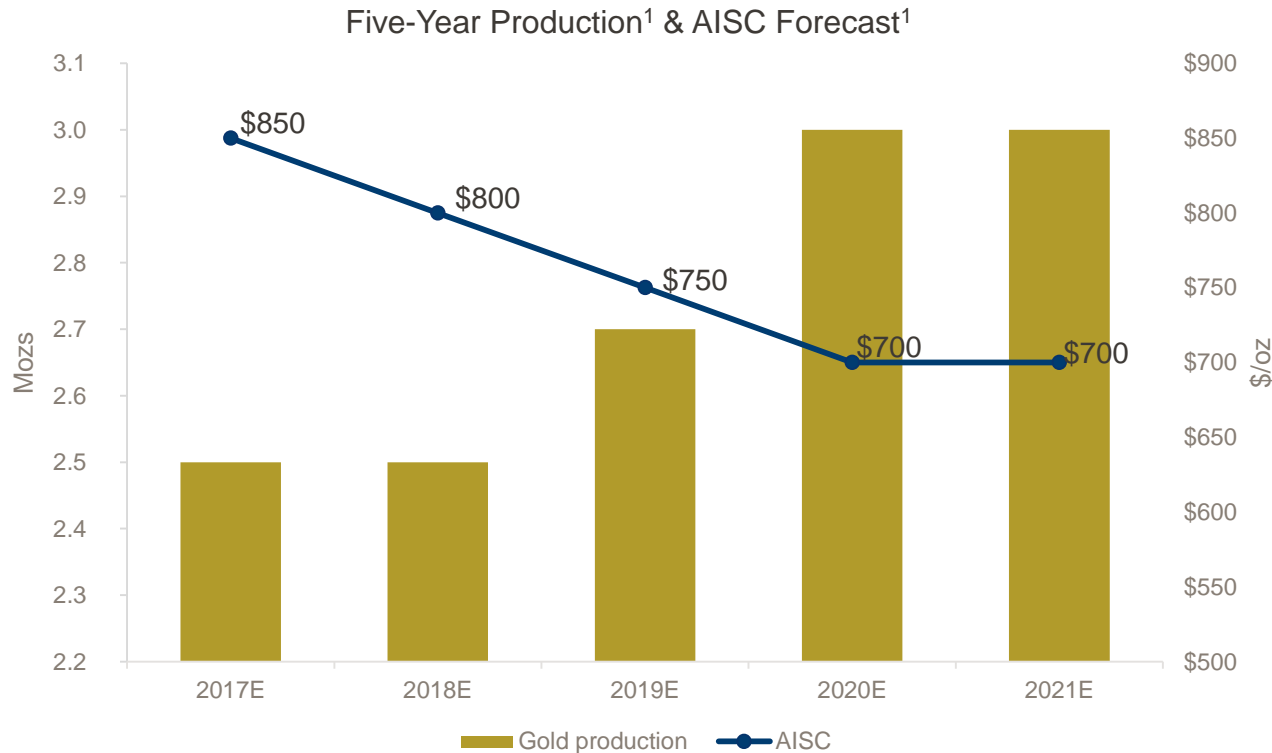
MINE SITE AND CORPORATE EFFICIENCIES TO ADD \$2B TO NAV⁽¹⁾

10

Identified 60% of \$250M target; 40% savings expected to be fully realized in 2017, on track to be achieved in 2018



⁽¹⁾ Desjardins research report, April 29, 2016



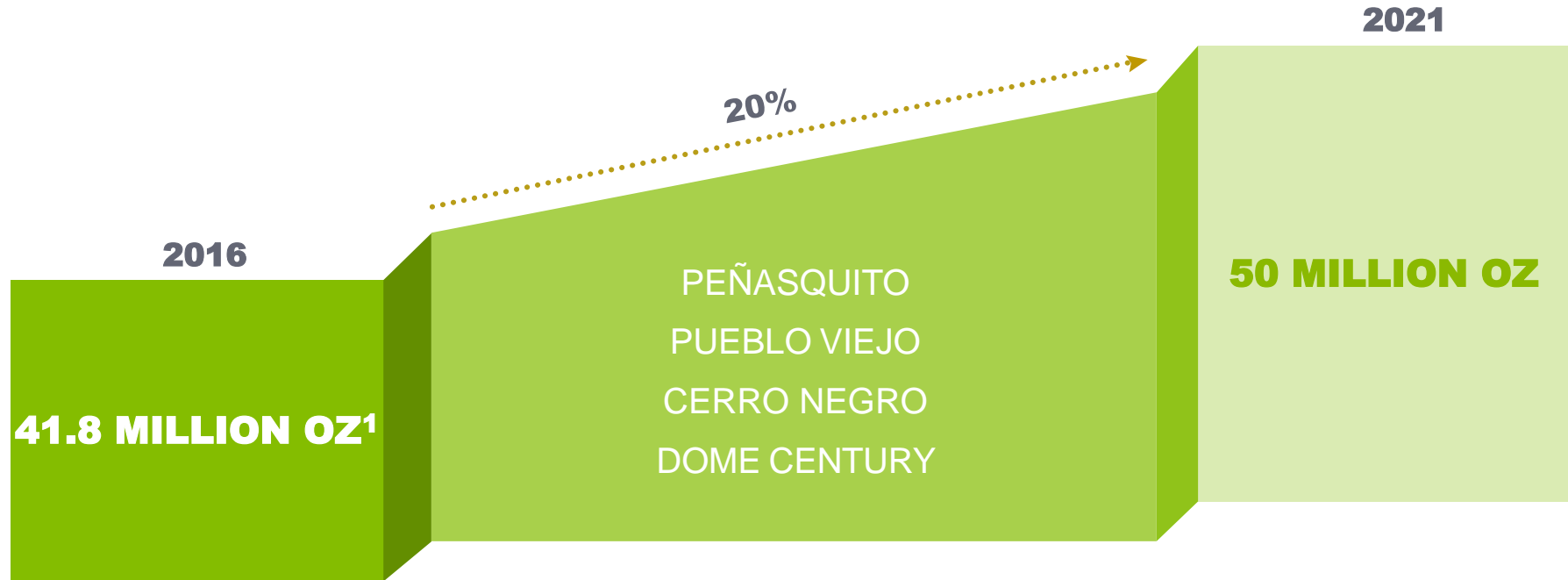
⁽¹⁾ Figures are +/- 5%, see Appendix C for pricing assumptions and footnotes



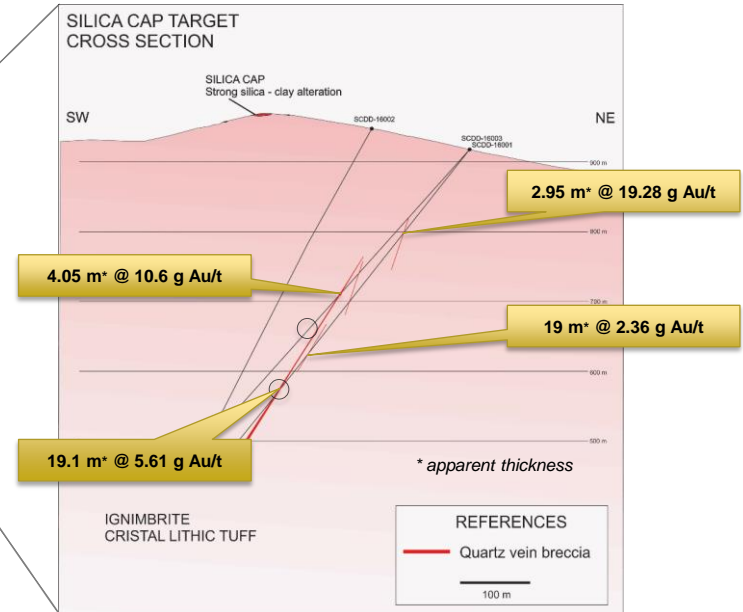
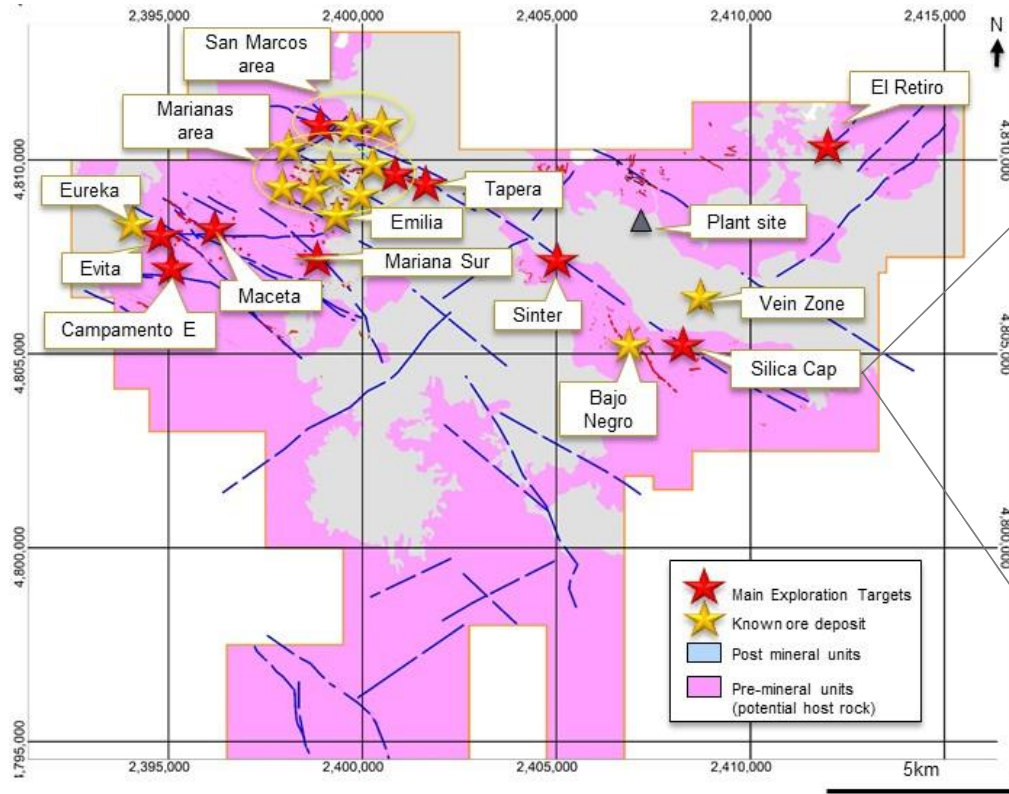
- Geologically centered in the Americas
- Exploration potential at existing sites with large, underexplored land packages

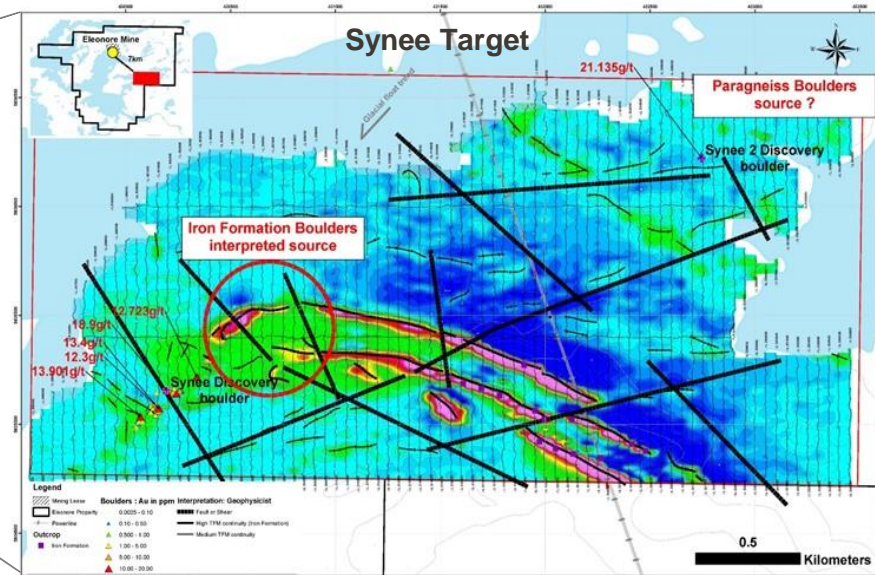
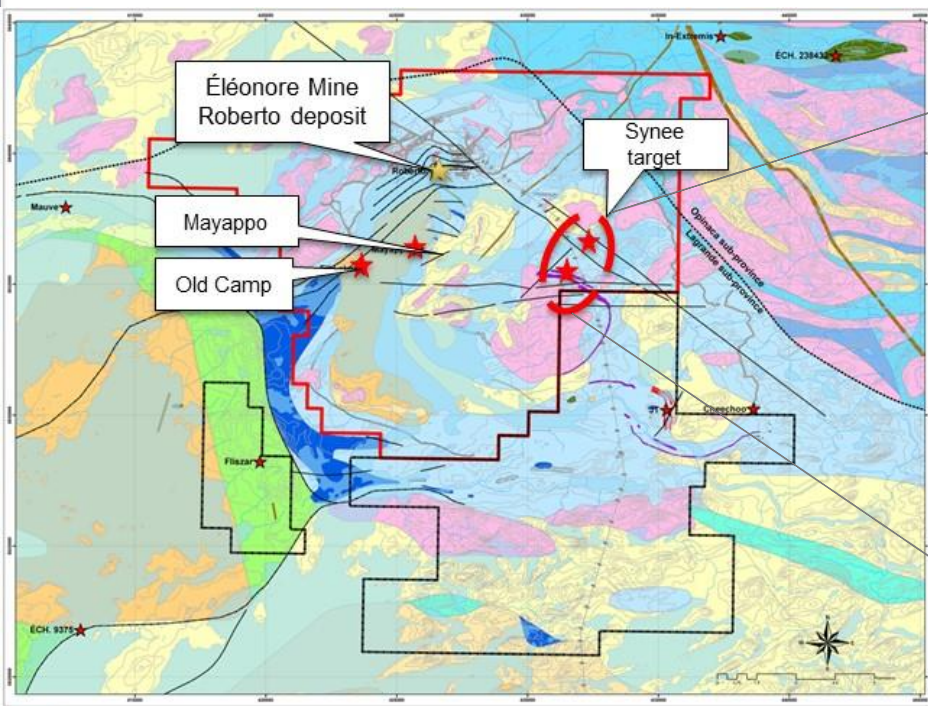
EXPLORATION EXPECTED TO GROW RESERVES TO 50 MILLION OUNCES IN FIVE YEARS

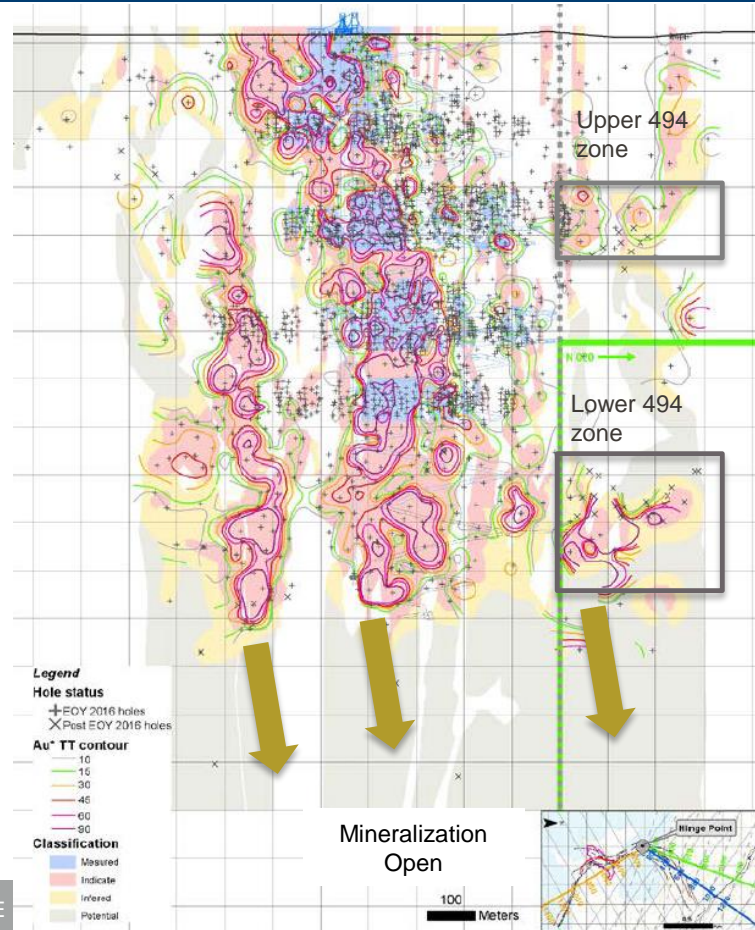
13

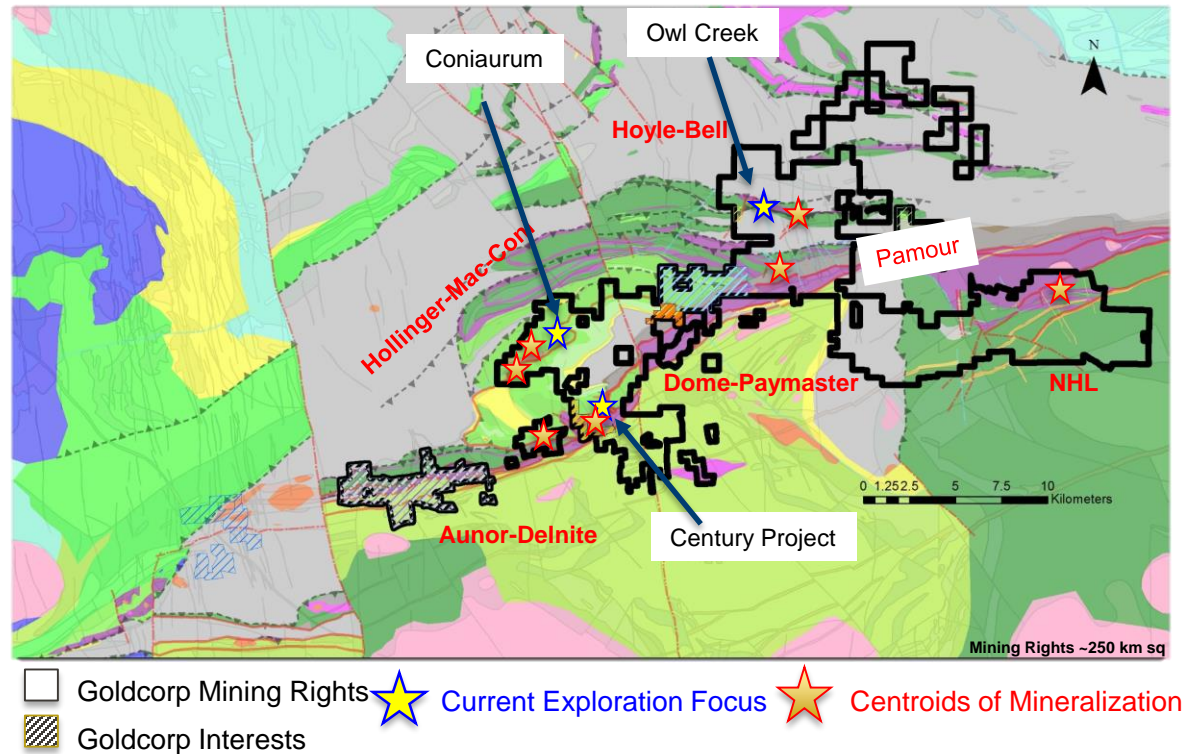


⁽¹⁾ As of June 30, 2016, refer to Appendix E for further information on the Reserves and Resources



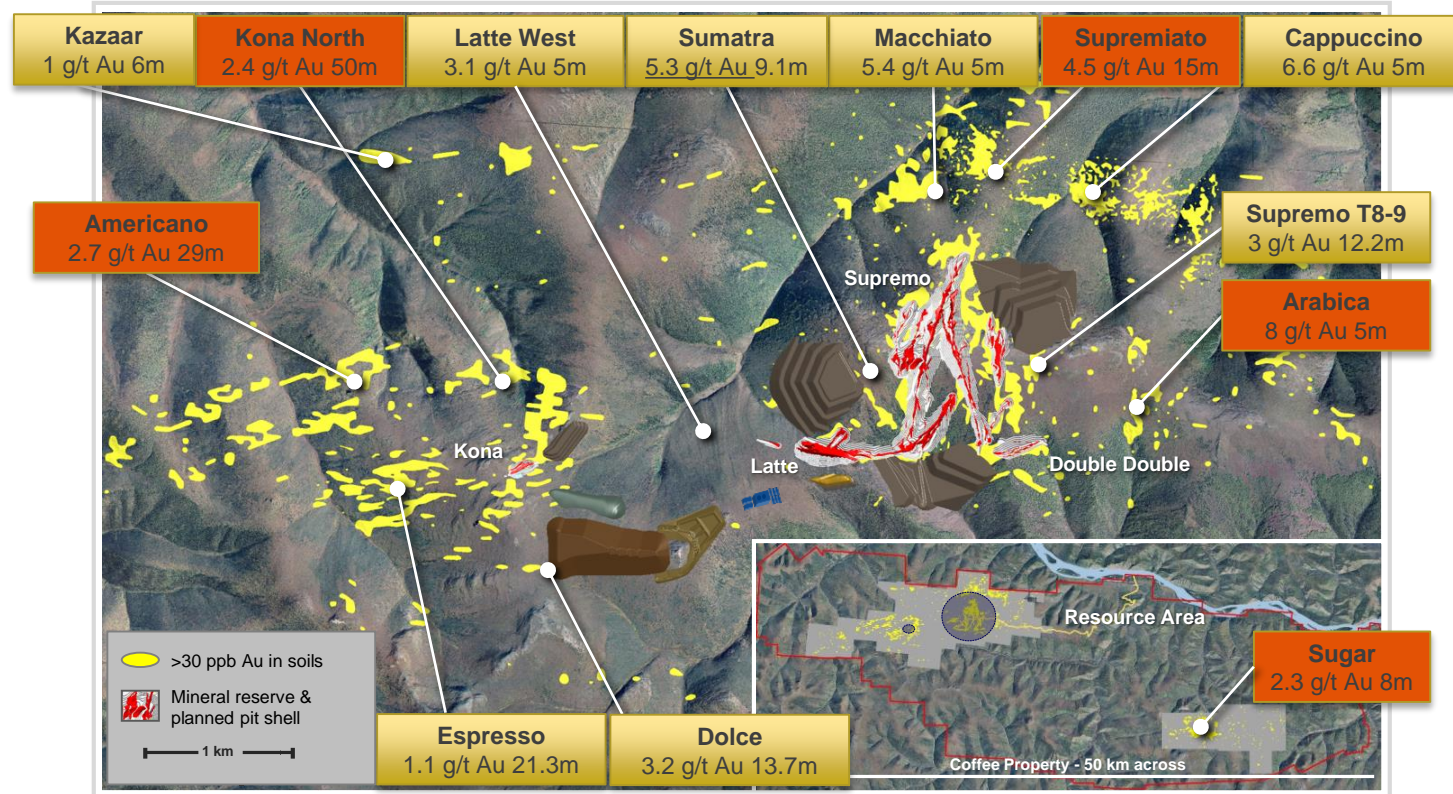






COFFEE – H2 2016 EXPLORATION DRILLING HIGHLIGHTS¹

18



¹See Goldcorp New Release dated October 26, 2016 titled 'Goldcorp Reports Updated Reserves and Resources; Provides Overview of Renewed Exploration Strategy and Results' for further information on drill results

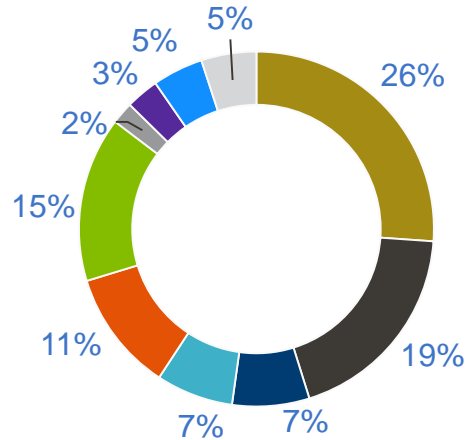
Positioned to Deliver Increasing Shareholder Value

- 20/20/20 growth strategy to drive increasing NAV per share
- Decentralization and optimization targeted to deliver \$250 million in sustainable annual efficiencies in 2018
- Reinvest free cash flow into robust pipeline of projects, de-leverage and pay a sustainable dividend
- Growth in reserves and production in an industry with declining reserves and production

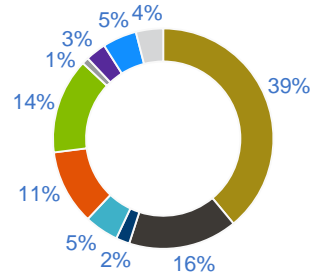
	Base Price	Change Increments	Operating Cash Flow per Share ⁽¹⁾	All-In Sustaining Costs (\$/oz) ⁽¹⁾	Free Cash Flow ⁽¹⁾ (\$M)
Gold price (\$/oz)	\$1,250	\$100	\$0.27	\$1	\$231
Silver price (\$/oz)	\$19.00	\$3.00	\$0.07	\$26	\$63
Canadian dollar	\$1.30	10%	\$0.09	\$38	\$115
Mexican peso	\$19.00	10%	\$0.04	\$9	\$49

⁽¹⁾ Refer to Appendix C for footnotes

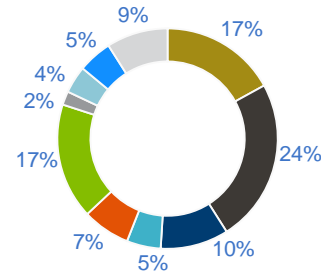
Consolidated



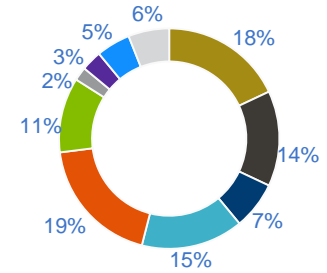
Canada



Latin America



Associates and Joint Ventures



- Labour
- Fuel Costs
- Maintenance Parts
- Tires
- Site Costs

- Contractors
- Power
- Consumables
- Explosives
- Others

Note 1: Guidance projections used in this document ("Guidance") are considered "forward-looking statements" and represent management's good faith estimates or expectations of future production results as of the date hereof. Guidance is based upon certain assumptions, including, but not limited to, metal prices, oil prices, certain exchange rates and other assumptions. 2017/2018 guidance assumes Au=\$1,250/oz, Ag=\$19.00oz, Cu=\$2.25/lb, Zn=\$1.00/lb, Pb=\$0.89/lb, \$1.30 CAD/USD, 19.00 MXN/USD. 2019-2021 guidance assumes Au=\$1,250/oz, Ag=\$19.00oz, Cu=\$2.25/lb, Zn=\$0.90/lb, Pb=\$0.80/lb, \$1.30 CAD/USD, 16.25 MXN/USD. Such assumptions may prove to be incorrect and actual results may differ materially from those anticipated. Consequently, Guidance cannot be guaranteed. As such, investors are cautioned not to place undue reliance upon Guidance and forward-looking statements as there can be no assurance that the plans, assumptions or expectations upon which they are placed will occur.

Note 2: Non-GAAP performance measures on an attributable (or Goldcorp's share) basis are included. Attributable performance measures include the Company's mining operations, including its discontinued operation, and projects, and the Company's share of Alumbra, Pueblo Viejo and NuevaUnión. The Company believes that disclosing certain performance measures on an attributable basis is a more relevant measurement of the Company's operating and economic performance, and reflects the Company's view of its core mining operations. The Company believes that, in addition to conventional measures prepared in accordance with GAAP, the Company and certain investors use this information to evaluate the Company's performance and ability to generate cash flow; however, these performance measures do not have any standardized meaning. Accordingly, it is intended to provide additional information and should not be considered in isolation or as a substitute for measures of performance prepared in accordance with GAAP.

Note 3: The Company's projected all-in sustaining costs are not based on GAAP total production cash costs, which forms the basis of the Company's by-product cash costs. The projected range of all-in sustaining costs is anticipated to be adjusted to include sustaining capital expenditures, corporate administrative expense, exploration and evaluation costs and reclamation cost accretion and amortization, and exclude the effects of expansionary capital, tax payments, dividends and financing costs. Projected GAAP total production cash costs for the full year would require inclusion of the projected impact of future included and excluded items, including items that are not currently determinable, but may be significant, such as sustaining capital expenditures, reclamation cost accretion and amortization and tax payments. Due to the uncertainty of the likelihood, amount and timing of any such items, we do not have information available to provide a quantitative reconciliation of projected all-in sustaining costs to a total production cash costs projection.

Note 4: AISC include total production cash costs incurred at the Company's mining operations, which forms the basis of the Company's by-product cash costs. Additionally, the Company includes sustaining capital expenditures, corporate administrative expense, exploration and evaluation costs, and reclamation cost accretion and amortization. The measure seeks to reflect the full cost of gold production from current operations, therefore growth capital is excluded. Certain other cash expenditures, including tax payments, dividends and financing costs are also excluded.

AISC is a non-GAAP performance measures that the Company believes more fully defines the total costs associated with producing gold; however, this performance measure has no standardized meaning. Accordingly, it is intended to provide additional information and should not be considered in isolation or as a substitute for measures of performance prepared in accordance with GAAP. The Company reports this measure on a gold ounces sold basis. The Company's all-in sustaining cost definition conforms to the guidance note released by the World Gold Council, which became effective January 1, 2014. The World Gold Council is a non-regulatory market development organization for the gold industry whose members comprise global senior gold mining companies.

APPENDIX D: GOLD MINERAL RESERVES

23

			GOLDCORP MINERAL RESERVES								
			Proven			Probable			Proven and Probable		
			Tonnage	Grade	Contained	Tonnage	Grade	Contained	Tonnage	Grade	Contained
Effective Date: June 30, 2016											
Note - JV's Effective Date: December 31, 2016											
			mt	g/t	m oz	mt	g/t	m oz	mt	g/t	m oz
Gold	Alumbra	37.5%	15.11	0.39	0.19	1.43	0.37	0.02	16.54	0.39	0.21
	Borden	100.0%	-	-	-	4.12	7.14	0.95	4.12	7.14	0.95
	Camino Rojo	100.0%	-	-	-	75.52	0.70	1.70	75.52	0.70	1.70
	Cerro Blanco	100.0%	-	-	-	-	-	-	-	-	-
	Cerro Negro	100.0%	5.02	9.86	1.59	11.64	8.72	3.26	16.66	9.06	4.85
	Cochenour	100.0%	-	-	-	-	-	-	-	-	-
	Coffee	100.0%	-	-	-	46.36	1.45	2.16	46.36	1.45	2.16
	El Morro	50.0%	160.91	0.56	2.91	138.62	0.35	1.55	299.53	0.46	4.46
	Éléonore	100.0%	3.09	6.72	0.67	20.35	5.97	3.90	23.44	6.07	4.57
	Los Filos	100.0%	23.88	0.75	0.57	16.83	1.65	0.89	40.71	1.12	1.47
	Marlin	100.0%	0.42	4.08	0.05	0.09	4.18	0.01	0.50	4.10	0.07
	Musselwhite	100.0%	3.17	6.79	0.69	5.04	6.14	0.99	8.21	6.39	1.69
	Noche Buena	100.0%	-	-	-	-	-	-	-	-	-
	Peñasquito Heap Leach	100.0%	8.42	0.40	0.11	2.06	0.39	0.03	10.47	0.40	0.13
	Peñasquito Mill	100.0%	393.84	0.58	7.38	195.16	0.40	2.50	589.00	0.52	9.89
	Porcupine	100.0%	7.86	2.59	0.65	37.83	1.34	1.62	45.70	1.55	2.28
	Pueblo Viejo	40.0%	40.45	2.82	3.67	16.77	3.19	1.72	57.21	2.93	5.39
	Red Lake	100.0%	1.28	11.71	0.48	6.26	7.67	1.54	7.55	8.36	2.03
	San Nicolas	21.0%	-	-	-	-	-	-	-	-	-
Totals			663.45	0.89	18.98	578.07	1.23	22.85	1,241.52	1.05	41.83

APPENDIX D: GOLD MINERAL RESOURCES

24

			GOLDCORP MINERAL RESOURCES											
			Measured			Indicated			Measured & Indicated			Inferred		
			Tonnage	Grade	Contained	Tonnage	Grade	Contained	Tonnage	Grade	Contained	Tonnage	Grade	Contained
			mt	g/t	m oz	mt	g/t	m oz	mt	g/t	m oz	mt	g/t	m oz
Effective Date: June 30, 2016														
Note - JV's Effective Date: December 31, 2016														
Gold	Alumbrera	37.5%	14.89	0.28	0.14	1.05	0.21	0.01	15.94	0.28	0.14	1.50	0.26	0.01
	Borden	100.0%	-	-	-	3.02	5.77	0.56	3.02	5.77	0.56	2.30	5.49	0.41
	Camino Rojo	100.0%	-	-	-	223.08	1.05	7.50	223.08	1.05	7.50	17.16	0.88	0.49
	Cerro Blanco	100.0%	-	-	-	2.05	12.69	0.84	2.05	12.69	0.84	0.75	9.34	0.23
	Cerro Negro	100.0%	1.39	6.36	0.28	5.46	6.20	1.09	6.84	6.23	1.37	2.13	4.15	0.28
	Cochenour	100.0%	-	-	-	0.60	15.03	0.29	0.60	15.03	0.29	3.91	17.09	2.15
	Coffee	100.0%	-	-	-	17.69	1.21	0.69	17.69	1.21	0.69	52.35	1.31	2.21
	El Morro	50.0%	9.90	0.53	0.17	36.28	0.38	0.44	46.18	0.41	0.61	339.03	0.30	3.23
	Éléonore	100.0%	3.21	7.27	0.75	1.92	2.97	0.18	5.14	5.66	0.93	9.73	7.52	2.35
	Los Filos	100.0%	111.67	0.80	2.88	270.15	0.82	7.14	381.82	0.82	10.02	162.65	0.76	4.00
	Marlin	100.0%	0.27	4.51	0.04	0.20	4.60	0.03	0.46	4.55	0.07	0.04	6.68	0.01
	Musselwhite	100.0%	0.37	4.79	0.06	2.51	5.01	0.40	2.88	4.98	0.46	6.80	5.48	1.20
	Noche Buena	100.0%	-	-	-	55.00	0.37	0.65	55.00	0.37	0.65	4.94	0.22	0.03
	Peñasquito Heap Leach	100.0%	7.33	0.21	0.05	15.23	0.20	0.10	22.56	0.21	0.15	0.04	0.01	0.00
	Peñasquito Mill	100.0%	118.40	0.28	1.05	185.08	0.27	1.60	303.49	0.27	2.66	28.22	0.30	0.27
	Porcupine	100.0%	25.16	1.40	1.13	198.06	1.16	7.39	223.22	1.19	8.52	45.15	1.64	2.38
	Pueblo Viejo	40.0%	6.79	2.33	0.51	63.64	2.33	4.76	70.43	2.33	5.27	1.90	2.05	0.12
	Red Lake	100.0%	1.43	19.79	0.91	3.05	15.38	1.51	4.48	16.79	2.42	4.58	17.77	2.62
	San Nicolas	21.0%	-	-	-	19.26	0.46	0.28	19.26	0.46	0.28	2.28	0.26	0.02
Totals			300.80	0.82	7.97	1,103.33	1.00	35.47	1,404.13	0.96	43.43	685.45	1.00	22.00

Goldcorp June 30, 2016 Reserve and Resource Reporting Notes:

1. All Mineral Reserves and Mineral Resources have been estimated in accordance with the CIM Definition Standards and NI 43-101 (see below for definition) or the JORC Code. The JORC Code has been accepted for current disclosure rules in Canada under NI 43-101. Subject to note 4 below, all Mineral Reserves, Ore Reserves and Mineral Resources set out in the tables above or elsewhere in this release have been reviewed and approved by Gil Lawson, P.Eng., Vice President of Geology and Mine Planning, Goldcorp, who is a qualified person as defined under National Instrument 43-101.
2. All Mineral Resources are reported exclusive of those Mineral Resources that were converted to Mineral Reserves.
3. Mineral Resources which are not Mineral Reserves do not have demonstrated economic viability.
4. Mineral Reserves and Mineral Resources are reported effective June 30, 2016, with the following conditions or exceptions:
 - Mineral Reserves and Mineral Resources for Pueblo Viejo are as per information provided by Barrick Gold Corporation effective December 31, 2016.
 - Mineral Reserves and Mineral Resources for Relincho and San Nicolas are as per information provided by Teck Resources Limited effective December 31, 2016.
 - Mineral Reserves and Mineral Resources for Alumbraera are as per information provided by Glencore plc effective December 31, 2016.
 - Mineral Reserves and Mineral Resources for Coffee are as per information provided by Kaminak Gold Corporation effective the transaction date of July 19, 2016.
 - Mineral Reserves and Mineral Resources for Los Filos are effective December 31, 2016.
5. Mineral Reserves are estimated using appropriate recovery rates and US\$ commodity prices of \$1,200 per ounce of gold, \$18.00 per ounce of silver, \$2.75 per pound of copper, \$0.90 per pound of lead, and \$0.95 per pound of zinc, unless otherwise noted below:
 1. Alumbraera \$1,300/oz gold, \$2.31/lb copper
 2. Pueblo Viejo \$1,200/oz gold, \$16.50/oz silver, \$3.00/lb copper
 3. Relincho \$13.70/lb molybdenum, \$2.80/lb copper
6. Mineral Resources are estimated using US\$ commodity prices of \$1,400 per ounce of gold, \$20 per ounce of silver, \$3.00 per pound of copper, \$1.00 per pound of lead, and \$1.00 per pound of zinc, unless otherwise noted below:
 1. Alumbraera \$1,300/oz gold, \$3.06/lb copper
 2. El Morro \$1,200/oz gold, \$2.75/lb copper
 3. Pueblo Viejo \$1,500/oz gold, \$17.50/oz silver, \$3.25/lb copper
 4. Relincho \$13.70/lb molybdenum, \$2.80/lb copper
 5. San Nicholas \$1,275/oz gold, \$22.50/oz silver, \$2.75/lb copper, \$1.00/lb zinc

Cautionary Note Regarding Reserves and Resources:

Scientific and technical information contained in this table relating to Mineral Reserves and Mineral Resources was reviewed and approved by Gil Lawson, P.Eng., Vice President, Geology and Mine Planning for Goldcorp, and a “qualified person” as defined by National Instrument 43-101 – Standards of Disclosure for Mineral Projects (“NI 43-101”). All Mineral Reserves and Mineral Resources have been estimated in accordance with the standards of the Canadian Institute of Mining, Metallurgy and Petroleum (“CIM”) and NI 43-101, or the Australasian Code for Reporting of Exploration Results, Mineral Resources and Ore Reserves equivalent (“JORC”). All Mineral Resources are reported exclusive of Mineral Reserves. Mineral Resources that are not Mineral Reserves do not have demonstrated economic viability. Information on data verification performed on the mineral properties mentioned in this table that are considered to be material mineral properties to the Company are contained in Goldcorp’s annual information form for the year ended December 31, 2015 and the current technical report for each of those properties, all available at www.sedar.com.

This table have been prepared in accordance with the requirements of Canadian securities laws, which differ from the requirements of United States securities laws and uses terms that are not recognized by the United States Securities and Exchange Commission (“SEC”). Canadian reporting requirements for disclosure of mineral properties are governed by NI 43-101. The definitions used in NI 43-101 are incorporated by reference from the CIM — Definition Standards adopted by CIM Council on May 10, 2014 (the “CIM Definition Standards”). U.S. reporting requirements are governed by the SEC Industry Guide 7 (“Industry Guide 7”) under the United States Securities Act of 1933, as amended. These reporting standards have similar goals in terms of conveying an appropriate level of confidence in the disclosures being reported, but embody different approaches and definitions. For example, the terms “Mineral Reserve”, “Proven Mineral Reserve” and “Probable Mineral Reserve” are Canadian mining terms as defined in NI 43-101, and these definitions differ from the definitions in Industry Guide 7. Under Industry Guide 7 standards, a “final” or “bankable” feasibility study is required to report reserves and the primary environmental analysis or report must be filed with the appropriate governmental authority. Further, under Industry Guide 7, mineralization may not be classified as a “reserve” unless the determination has been made that the mineralization could be economically and legally produced or extracted at the time the reserve determination is made.

While the terms “Mineral Resource”, “Measured Mineral Resource”, “Indicated Mineral Resource” and “Inferred Mineral Resource” are defined in and required to be disclosed by NI 43-101, these terms are not defined terms under Industry Guide 7 and are normally not permitted to be used in reports and registration statements filed with the SEC. United States readers are cautioned not to assume that any part or all of mineral deposits in these categories will ever be converted into reserves. In addition, “Inferred Mineral Resources” have a great amount of uncertainty as to their existence and their economic and legal feasibility. A significant amount of exploration must be completed in order to determine whether an Inferred Mineral Resource may be upgraded to a higher category. Under Canadian regulations, estimates of Inferred Mineral Resources may not form the basis of feasibility or pre-feasibility studies, except in rare cases. United States readers are cautioned not to assume that all or any part of an Inferred Mineral Resource exists or is economically or legally mineable. Disclosure of “contained ounces” in a resource is permitted disclosure under Canadian regulations if such disclosure includes the grade or quality and the quantity for each category of Mineral Resource and Mineral Reserve; however, the SEC normally only permits issuers to report mineralization that does not constitute “reserves” by SEC standards as in place tonnage and grade without reference to unit measures.

Accordingly, information contained in this presentation containing descriptions of the Company’s mineral deposits may not be comparable to similar information made public by United States companies subject to the reporting and disclosure requirements under the United States federal securities laws and the rules and regulations thereunder.

	2016	2017				
Mine	Gold Production ¹ (oz)	Gold Production ¹ (oz)	AISC ¹ (\$/oz)	Capital Expenditure		Exploration ¹
				Sustaining ¹	Growth ¹	
Peñasquito	465,000	410,000	\$825	\$285M	\$300M	\$10M
Cerro Negro	363,000	410,000	\$685	\$90M	\$25M	\$20M
Pueblo Viejo	467,000	415,000	\$530	\$55M	\$0	\$0
Éléonore	274,000	315,000	\$985	\$65M	\$60M	\$10M
Red Lake	324,000	300,000	\$870	\$75M	\$30M	\$20M
Porcupine	277,000	285,000	\$900	\$60M	\$70M	\$10M
Musselwhite	261,000	265,000	\$715	\$45M	\$40M	\$10M
Other	442,000	100,000	\$1,250	\$25M	\$75M	\$20M
Consolidated	2,873,000	2,500,000 (+/- 5%)	\$850 (+/- 5%)	\$700M (+/- 5%)	\$600M (+/- 5%)	\$100M
Consolidated by- product costs¹			\$500 (+/-5%)			

(1) Refer to Appendix C for footnotes

Five-year guidance

Year	Gold Production ¹ (oz)	AISC ¹ (\$/oz)	By-product ¹ (\$/oz)	Capital Expenditure ¹ (+/- 5%)	
	(+/- 5%)	(+/- 5%)	(+/- 5%)	Sustaining	Growth*
2017E	2,500,000	\$850	\$500	\$700M	\$600M
2018E	2,500,000	\$800	\$450	\$650M	\$400M
2019E	2,700,000	\$750	\$400	\$650M	\$150M
2020E	3,000,000	\$700	\$400	\$650M	\$250M
2021E	3,000,000	\$700	\$400	\$650M	\$100M

*Growth capital includes capital for those projects which are in execution and/or have an approved Feasibility Study. Other projects only include capital to progress to the next Stage Gate.

⁽¹⁾ Refer to Appendix C for footnotes



Trading Symbols

NYSE: GG; TSE: G

Investor Relations

1-800-567-6223

info@goldcorp.com



WORLD
GOLD
COUNCIL



GOLDCORP