

IMS Health

Ron Bruehlman, SVP & CFO
November 19th, 2014



IMS Health Confidential.
(c) 2014 IMS Health Incorporated.
All Rights Reserved.

Legal

Forward-Looking Statements

This presentation includes “forward-looking statements.” The words “believes,” “expects,” “may,” “will” and similar expressions are intended to identify forward-looking statements, although not all forward-looking statements contain these identifying words. Forward-looking statements are not guarantees that the future results, plans, intentions or expectations expressed or implied will be achieved. Matters subject to forward-looking statements involve known and unknown risks and uncertainties, including regulatory, competitive and other factors, which may cause actual financial or operating results or the timing of events to be materially different than those expressed or implied by forward-looking statements. Important factors that could cause or contribute to such differences include, but are not limited to, the factors set forth in the “Risk Factors” section of IMS Health’s registration statement on Form S-1 on file with the SEC, IMS Health’s Form 10-Q for the period ending September 30, 2014 and any subsequent SEC filings. IMS Health disclaims any obligation to update any forward-looking statements as a result of developments occurring after the date of this presentation, and you should not rely on those statements as representing IMS Health’s views as of any date subsequent to the date of this presentation.

Non-GAAP

There are non-GAAP measures used in this communication, including EBITDA. The Company believes that such non-GAAP measures are appropriate measures of the operating performance of the Company. The Company’s calculation of these measures may differ from the methodology used by other companies and, accordingly, may not be comparable to other companies. Adjusted EBITDA, as we use it, is net income before interest, income taxes, depreciation and amortization. EBITDA is not a measure recognized under GAAP and are therefore unlikely to be comparable to similar measures presented by other companies and do not have a standardized meaning prescribed by GAAP. Management uses EBITDA and believes that it provides greater transparency into our results of operation and is frequently used by investors in the evaluation of companies in the industry.

Who We Are



Mission

- Leverage **information and technology services** to **deliver intelligence** and **drive improved performance** for a growing universe of **healthcare customers globally**



History

- 60+ years provider of mission-critical information to life sciences companies, deployed in 100+ countries
- Taken private in 2010 and IPO in 2014



Highlights

- Expanding market opportunity
- Deeply integrated into customers' processes
- Scalable operating model

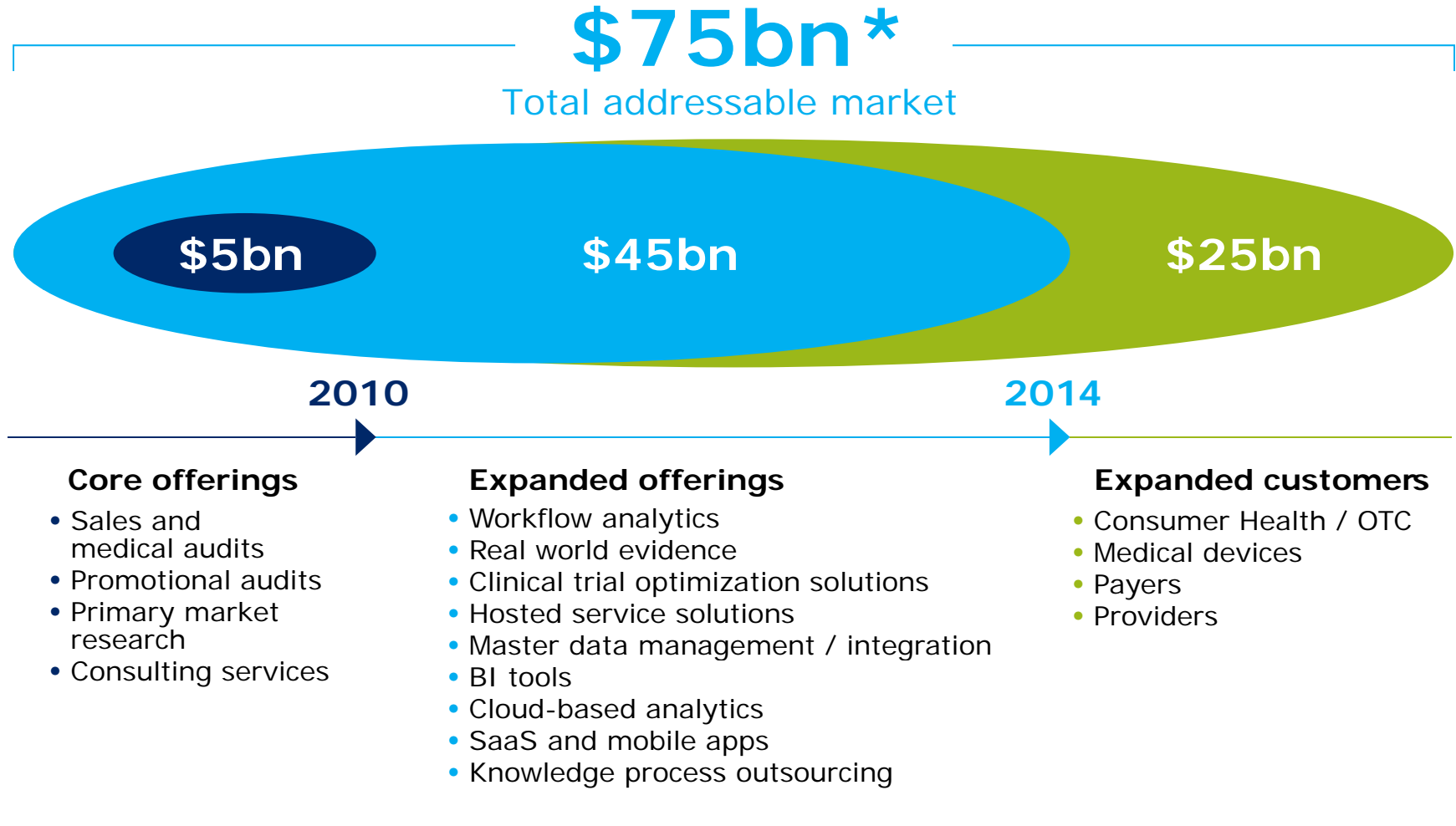


Results

- Revenue \$2.6bn, 6% CAGR 2010 – LTM 2014
- EBITDA \$876mm, 10% CAGR 2010 – LTM 2014

EBITDA is "Adjusted EBITDA" as defined in the IMS Health financial statements. Growth rates calculated on a constant currency basis. 2014 LTM is through September 2014.

Market Positioning



Core offerings

- Sales and medical audits
- Promotional audits
- Primary market research
- Consulting services

Expanded offerings

- Workflow analytics
- Real world evidence
- Clinical trial optimization solutions
- Hosted service solutions
- Master data management / integration
- BI tools
- Cloud-based analytics
- SaaS and mobile apps
- Knowledge process outsourcing

Expanded customers

- Consumer Health / OTC
- Medical devices
- Payers
- Providers

* As estimated by IMS Health.

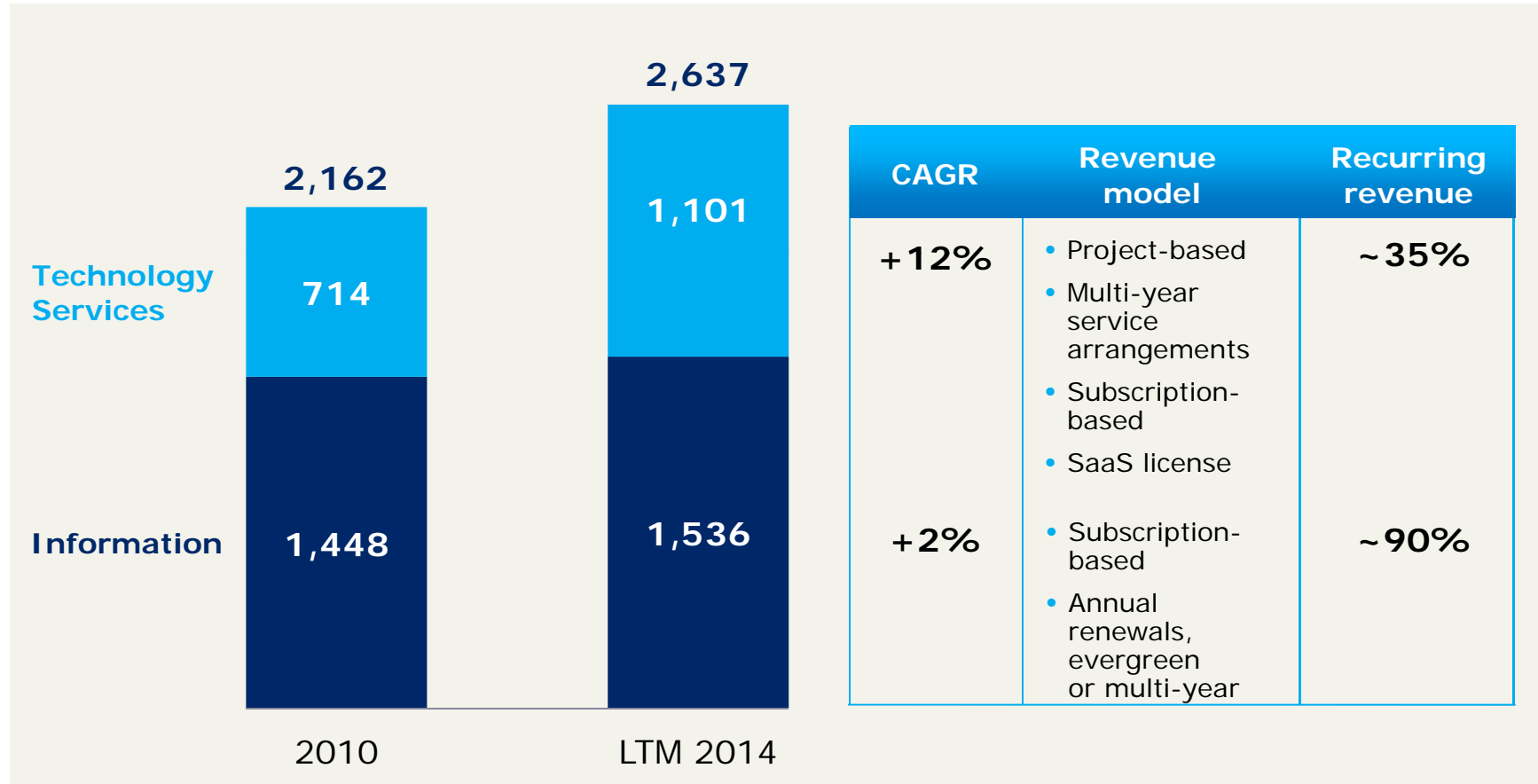
Operational Excellence

	2010	2014
Revenue growth	-2% CAGR 2007-2010	+6% CAGR 2010-LTM 2014
EBITDA growth	-6% CAGR 2007-2010	+10% CAGR 2010-LTM 2014
EBITDA margin	27% 2009	33% LTM 2014
Customer-facing resources	<33%	>50%
Offshore delivery resources	<250	>2,500
Development capabilities	>70% outsourced	>70% in-house
Continuous improvement	0 LEAN experts 0 KAIZEN events	550+ LEAN experts 750+ KAIZEN events
Acquisition spend	<\$200mm 2006-2009	>\$650mm 2010-2014

EBITDA is "Adjusted EBITDA" as defined in the IMS Health financial statements. Growth rates & margin calculated on a constant currency basis.
 Acquisition spend does not include earn-out payments.
 2014 LTM is through September 2014.

Revenue

\$mm



Dollar values as reported for GAAP.
 Growth rates calculated on a constant currency basis.
 2014 LTM is through September 2014.

Offerings

Integrated solutions

Information

National audits

Regional sales audits

Non biopharma audits

Technology services

Technology and applications

Workflow analytics

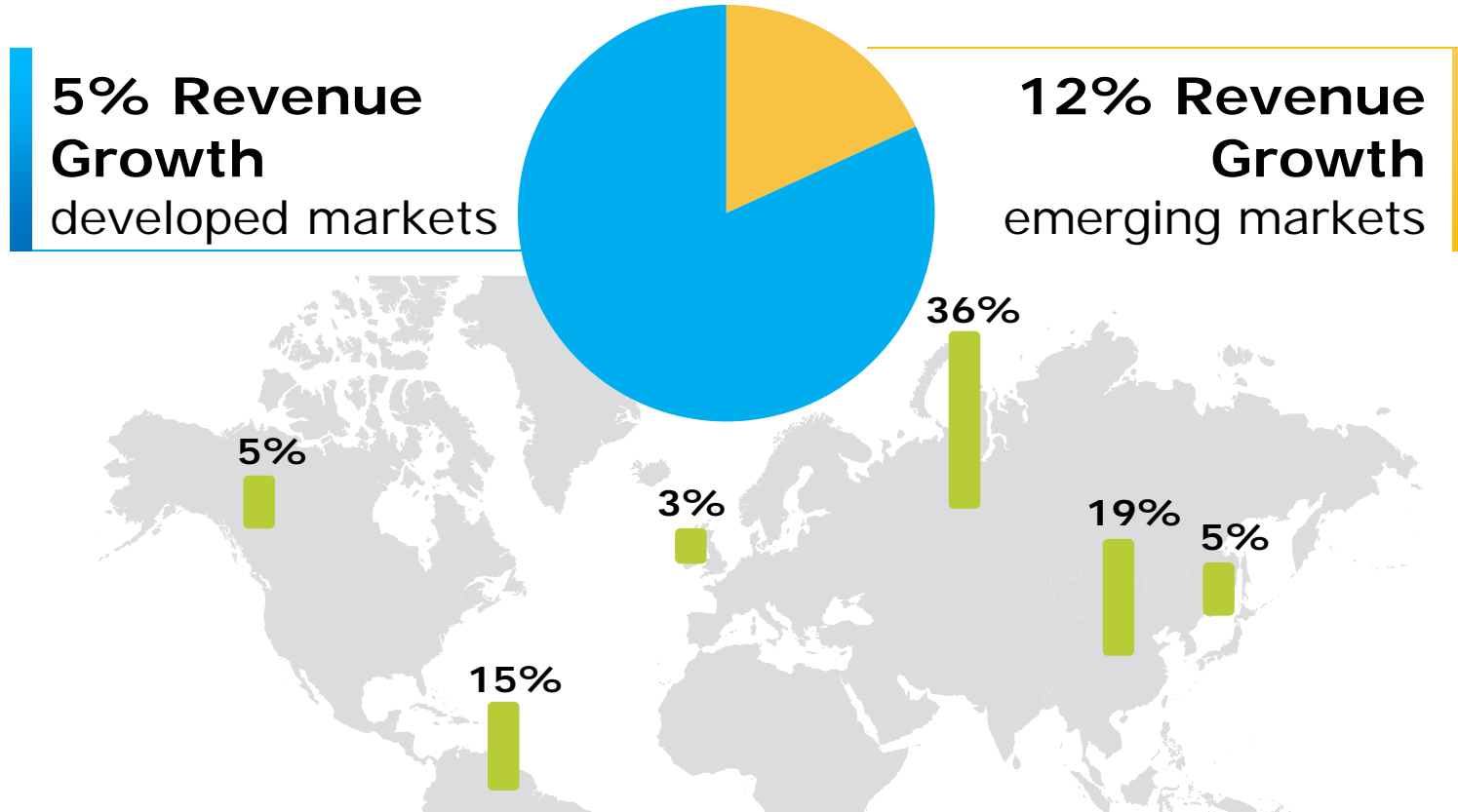
Real world evidence

Consulting services

Note: Audits = Sales, volume, visits, diagnoses, etc.

Geographic Growth Profile

2010 – LTM 2014 CAGR %



2014 LTM is through September 2014.

