

CARDIO & VASCULAR

Medical Device Design, Development
and Manufacturing Solutions





AMPLIFY YOUR INNOVATION. GET TO MARKET FASTER.

We live in an era of incredible breakthroughs. And yet, rising costs, shrinking reimbursement and competitive pressures make it difficult for medical device companies to stay on the frontlines of innovation while achieving all the deliverables required to bring new products to market. For medical device companies, and for the patients who count on them, the promise of new medical innovations can only be fully realized when working together with partners who can extend their reach. That's where Integer comes in.

At Integer, we channel all our technology, expertise and resources to collaborate with many of the world's leading medical device companies.

As a trusted partner, we support our customers with:

Design and development solutions

that strengthen and de-risk new product development

Market-ready guidewires and introducers

to deliver your unique therapies

Advanced manufacturing

to meet your exact requirements and quality standards

COLLABORATIVE PARTNERSHIP TO REALIZE YOUR PRODUCT DEVELOPMENT

As an established medical device company, we understand your clinical, development and manufacturing challenges. Our collaborative approach starts with assessing your unique requirements, suggesting adjustments to optimize product design and leveraging years of experience to realize your project goals and get you to design freeze faster.

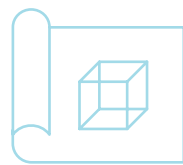
Our comprehensive services include:



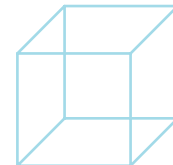
Project Management



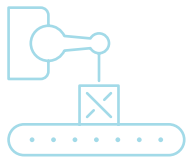
Product Development



Engineering



Prototyping



Design for Manufacturability



Materials Selection



Testing and Validation



Regulatory



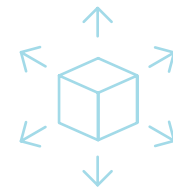
Production Process Development



Custom Tooling



Manufacturing



Finishing Operations



Product Assembly



Sterilization



Labeling and Packaging



Inventory Management and Distribution

EXPERTISE

We support customers with a broad range of components, sub-assemblies, finished devices and procedural trays and kits.

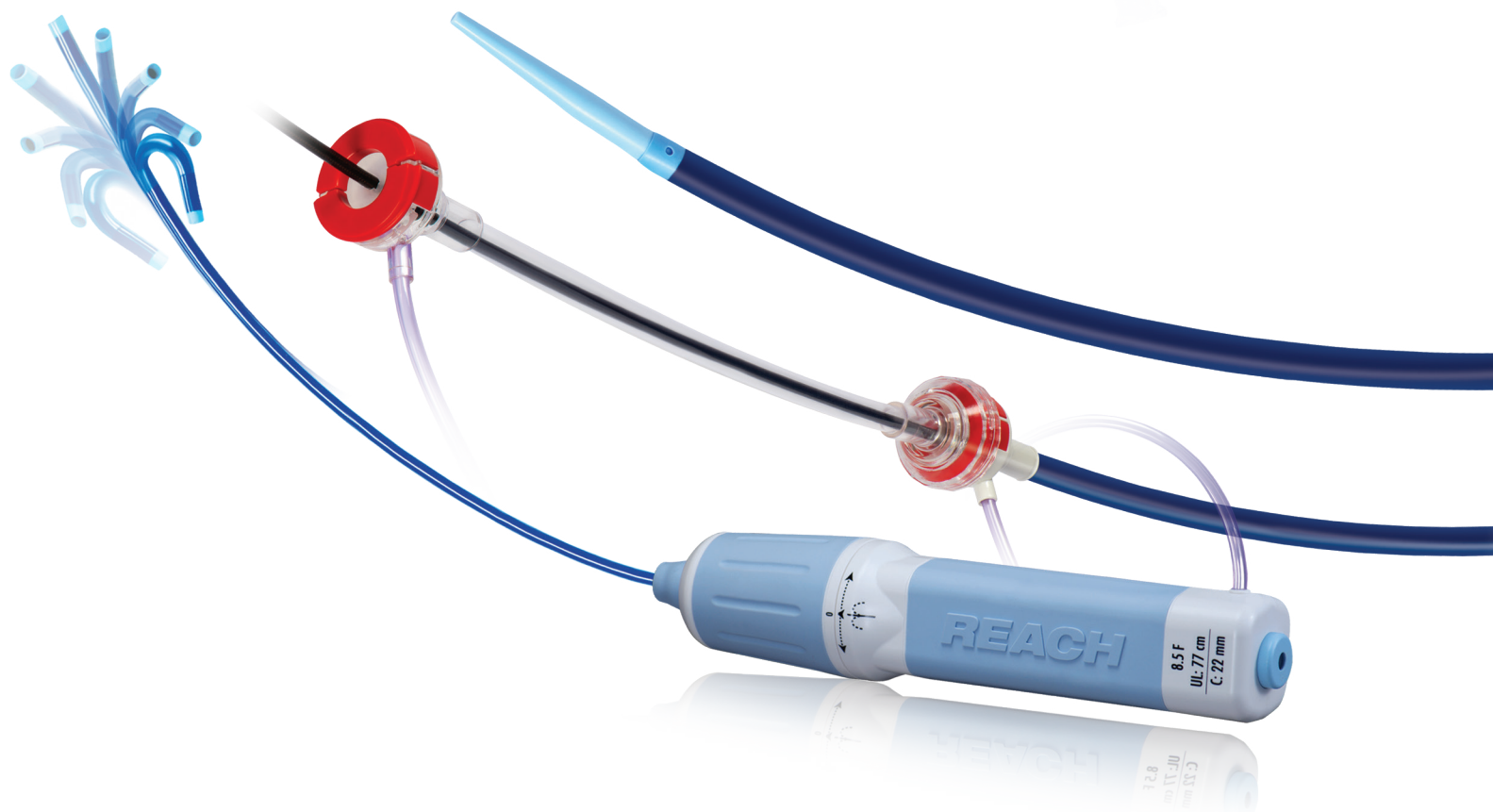


CATHETERS

- Single source for conventional and steerable catheters for a range of clinical applications
- Sizes 1 Fr to 35 Fr
- Molded luers with integral or separate kink resistant strain relief
- Extensive extrusion experience with a variety of materials including Pebax®, polyamide (nylon), polycarbonate, polyurethane, polypropylene, PEEK, polyethylene, TPE (thermosplastic elastomer), HDPE (high density polyethylene) and PET (polyethylene terephthalate)
- Filmcast capabilities for PTFE liners, FEP, Tecoflex®, Pebax®, nylon, Kynar®, polyimide, single- and multilayer composite shafts and reinforced shafts
- Extruded liners (PFA, ETFE, FEP, Kynar®, Pebax®, Nylon, HDPE)
- Reflowed catheter shafts
- Braid or coil reinforced shafts
- Multi-segment and multi-durometer shafts
- Single- and multi-lumen shafts
- Marker bands
- Complex laser cut and machined components
- Radiopaque fillers
- Ring-on-wire electrode assembly
- Ablation tips
- Unidirectional, bi-directional and quad-directional (360° articulation) handles; multi-anchor point; multi-plane; passive and active return; pull wires and steerable tips
- Extensive finishing operations
- Catheter performance modeling services
- Complex laser cut and machined components

INTRODUCER SHEATHS & GUIDING SHEATHS

- Single source for introducer sheaths for a range of clinical applications
- Single source conventional and steerable guiding sheaths for a range of clinical applications
- Portfolio of regulatory-approved peelable introducers, step-up introducers, arterial introducers and steerable sheaths
- Interlocking sheath/dilator assemblies
- Complete introducer kits (sheath/dilator, needle and guidewire)
- Unidirectional, bi-directional and quad-directional (360° articulation) handles; multi-anchor point; multi-plane; passive and active return; pull wires and steerable tips



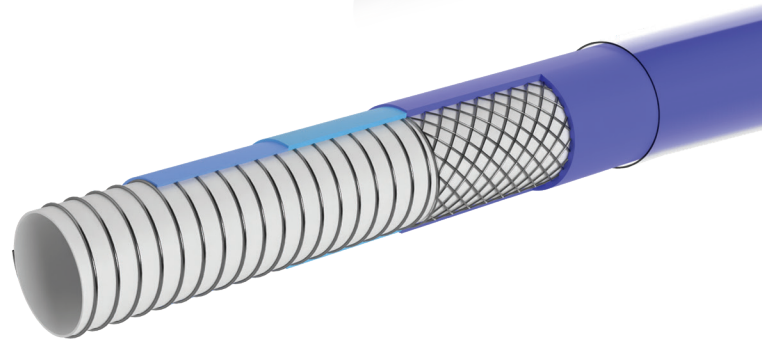
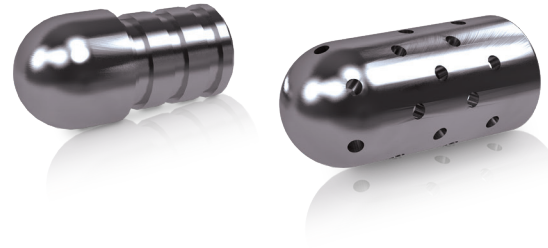


GUIDEWIRES

- Global leader in regulatory-approved, custom and build-to-print guidewires
- Proven expertise in components, sub-assemblies, and finished device assemblies with deep expertise in core grinding, coil winding, wire coating, metal joining and tip shaping
- Portfolio of uncoated spring coil guidewires, PTFE-coated spring coil guidewires and mandrel guidewires for a range of vascular access and diagnostic applications
- Portfolio of interventional guidewires for a range of clinical applications including coronary, peripheral vascular, structural heart, electrophysiology, endovascular and endoscopic
- Innovative technology for joining dissimilar materials, enhanced torque control and proprietary alloys
- Broad selection of hydrophilic, silicone, PTFE, ETFE, polyimide and parylene coatings
- Bulk non-sterile and finished packaged solutions

METAL, COMPLEX BRAIDING, MEDICAL TEXTILES & IMPLANT COATINGS

- Precious metal components and assemblies
- Braiding (stainless steel, NiTi, tungsten, tantalum, titanium, copper, platinum, MP35N®, polyester, polyethylene terephthalate, ultra-high-molecular-weight polyethylene, radiopaque yarn, resorbable polymers, sutures)
- Nitinol wire forming, heat setting, finishing and electropolishing
- Laser cutting and postprocessing of complex metal components and subassemblies
- Thin polymer molding and dip coating in a range of materials including Pellethane®, Pebax®, polyimide, ePTFE, BioSpan®, Elast-Eon®
- Implantable textile and fabric development, PTFE implant encapsulation, and implant coating



CORE WIRES, MANDRELS & STYLETS

- Precision grinding of unique profiles for core wires, stylets and mandrels in stainless steel and/or nitinol
- Custom ground cores in a broad range of configurations to meet unique requirements
- Broad range of stylet solutions including knobbed twisted-core stylets with specialty coatings and end forms to less complicated stylets with simple tapers

©2025 Greatbatch Ltd. and its affiliates. All rights reserved.



Integer | Corporate Headquarters
5830 Granite Parkway, Suite 1150
Plano, TX 75024
CV-Solutions@Integer.net | [Integer.net](https://www.Integer.net)