



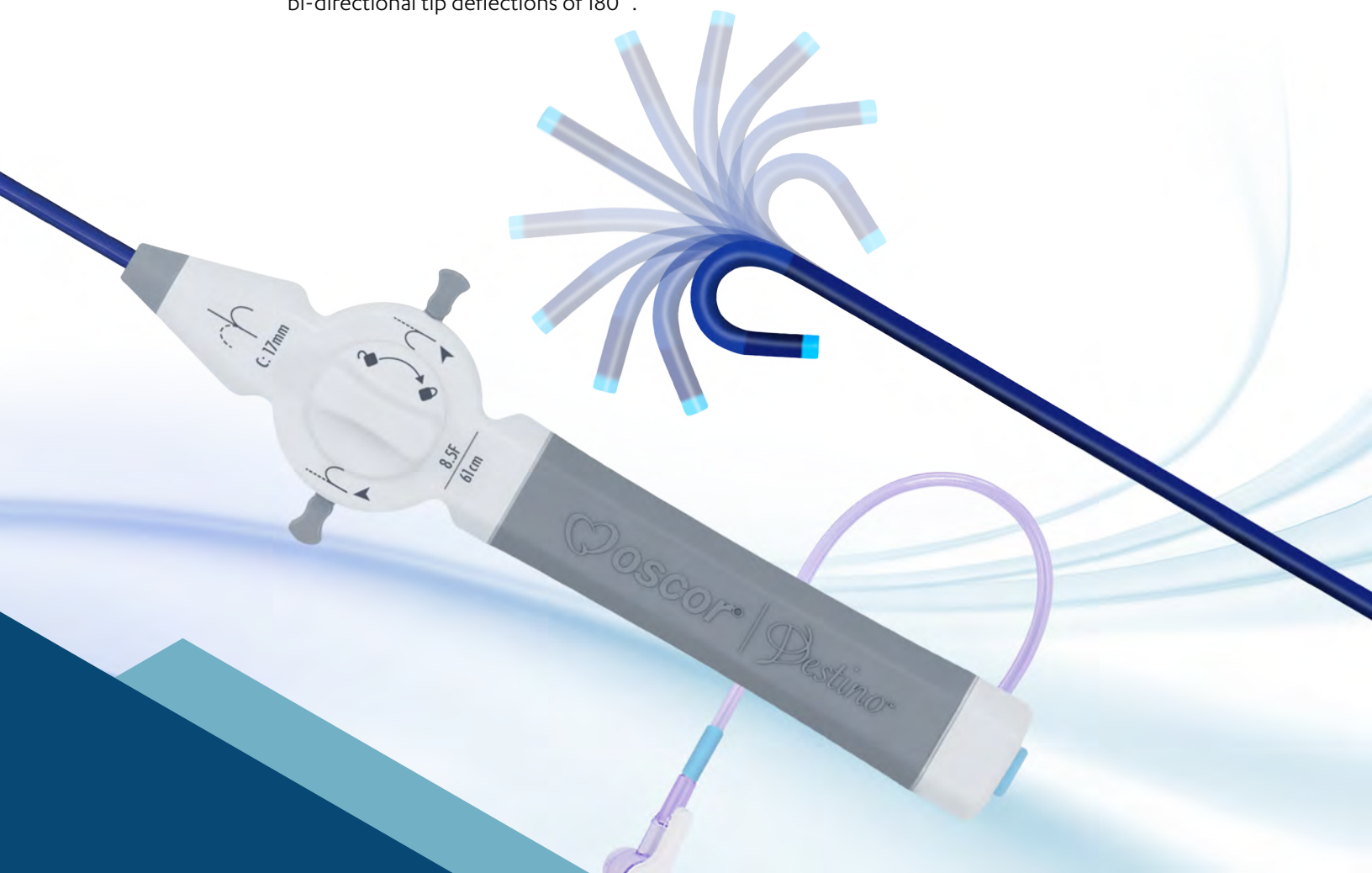
Oscor® Inc. – an Integer Company

Destino™

Steerable Guiding Sheath

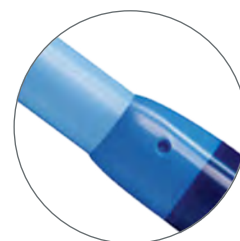
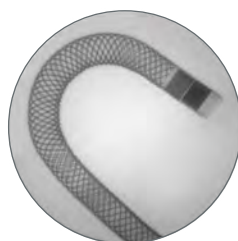
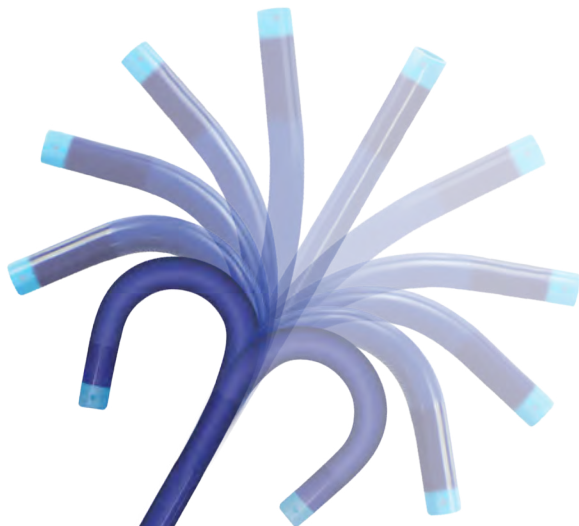
The Destino™ is a next generation bi-directional steerable guiding sheath for the introduction and placement of diagnostic and therapeutic devices into the human vasculature, including but not limited to intracardiac, transseptal, and other placements.

Featuring a next generation hemostatic valve and braided FlexSteer™ Shaft Technology, the Destino™ is the only available steerable sheath in a size range of 8.5F, 10F, and 12F with true bi-directional tip deflections of 180°.



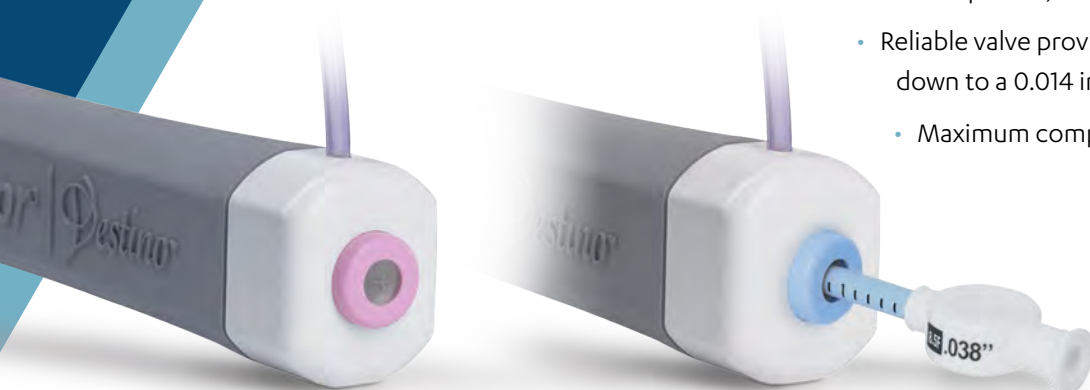
FEATURES:

- Easy locking ergonomic handle with curve diameter and French size indicator provides precise control and more comfort
- Bi-directional steering allows dual deflection for maximum maneuverability



- Radiopaque tip marker enhances fluoro visibility
- Braided Flexsteer™ shaft provides exceptional torqueability, pushability, and kink resistance
- Steerable hydrophobic coated sheath improves access to hard-to-reach sites and eliminates need to change out sheaths to reach desired position
- Smooth tapered sheath tip to dilator transition with two sheath side holes
- Soft, atraumatic tip reduces potential for trauma during transseptal punctures and provides smooth transition to catheter

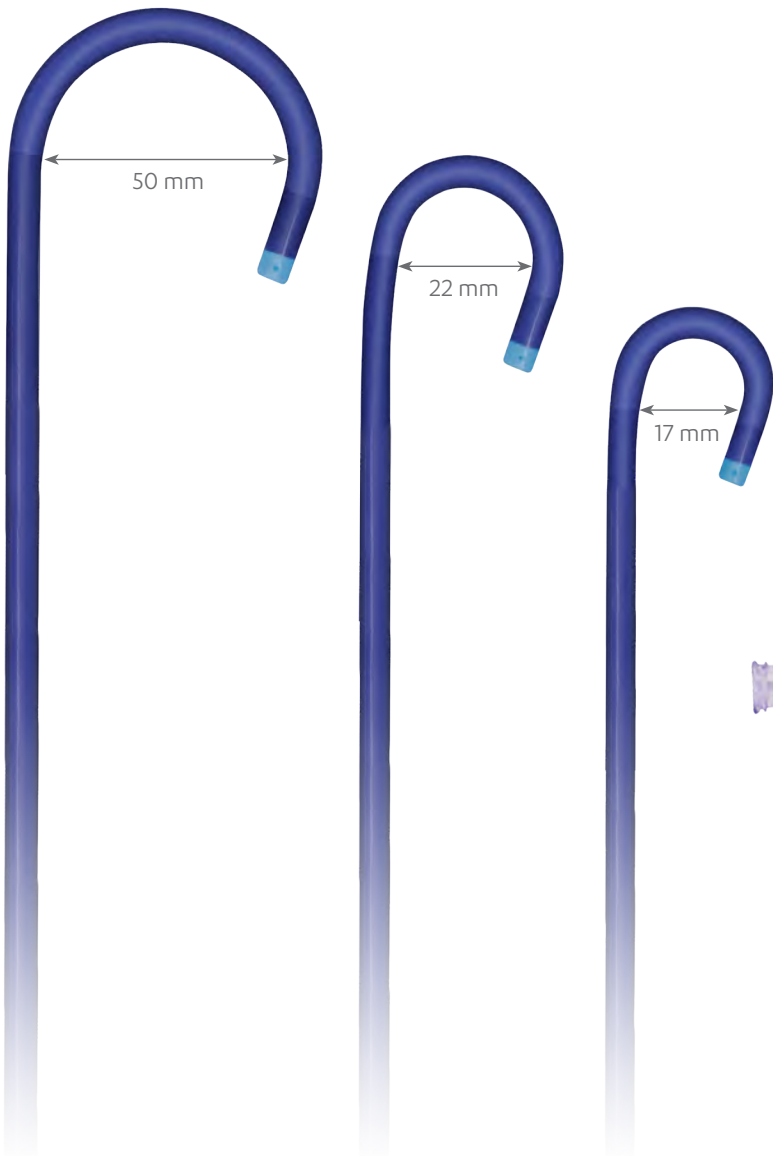
- Dilator tip construction and depth markings ensures exact needle exposure, also available in 50° curve
- Reliable valve provides effective hemostasis and seals down to a 0.014 inch guidewire
- Maximum compatible guidewire 0.038"/0.97 mm



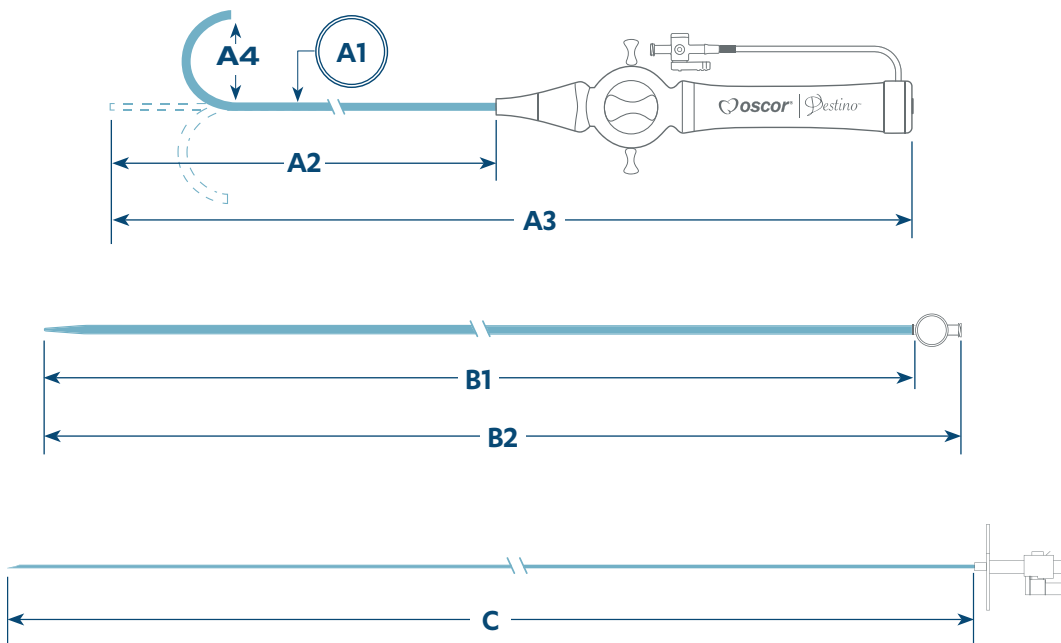
SHAFT DIAMETERS



CURVE CONFIGURATIONS



ORDERING INFORMATION



Destino™ Kit:

- (1) Steerable Guiding Sheath
- (1) Straight or 50° Curved Dilator
- (1) Guidewire, OD: 0.035", L: 180 cm

Destino™ Set:

- (1) Steerable Guiding Sheath
- (1) Straight or 50° Curved Dilator

Model # Kit (One per box)	Model # Set (One per box)	A1 Sheath Inner Diameter	A2 Usable Sheath Length	A3 Overall Sheath Length	B1 Usable Dilator Length	B2 Overall Dilator Length	A4 Sheath Curve Size	C Compatible Transseptal Needle
Straight Dilator								
DS857117GW	DS857117	● 8.5 F	71 cm	91 cm	94 cm	96 cm	17 mm	98 cm
DS857122GW	DS857122	● 8.5 F	71 cm	91 cm	94 cm	96 cm	22 mm	98 cm
DS857150GW	DS857150	● 8.5 F	71 cm	91 cm	94 cm	96 cm	50 mm	98 cm
DS106722GW	DS106722	● 10 F	67 cm	87 cm	90 cm	92 cm	22 mm	98 cm
DS126750GW	DS126750	● 12 F	67 cm	87 cm	90 cm	92 cm	50 mm	98 cm
50° Curved Dilator								
DC857117GW	DC857117	● 8.5 F	71 cm	91 cm	94 cm	96 cm	17 mm	98 cm
DC857122GW	DC857122	● 8.5 F	71 cm	91 cm	94 cm	96 cm	22 mm	98 cm
DC857150GW	DC857150	● 8.5 F	71 cm	91 cm	94 cm	96 cm	50 mm	98 cm
DC106722GW	DC106722	● 10 F	67 cm	87 cm	90 cm	92 cm	22 mm	98 cm
DC126750GW	DC126750	● 12 F	67 cm	87 cm	90 cm	92 cm	50 mm	98 cm

Guiding sheaths are supplied sterile. For single use only.
Standard lengths are noted above. Other lengths available upon request.

Caution: Federal Law restricts this device to sale by or on the order of a physician (U.S.A.). Please refer to the Instructions for Use for a complete listing of the indications, contraindications, precautions and warnings, where applicable.



Integer | Corporate Headquarters
5830 Granite Parkway, Suite 1150
Plano, TX 75024
CV-Solutions@Integer.net | Integer.net

Manufactured by Oscor Inc. – An Integer Company
Toll Free: 1-800-726-7267
P: +1 727-937-2511
sales@oscor.com | www.oscor.com